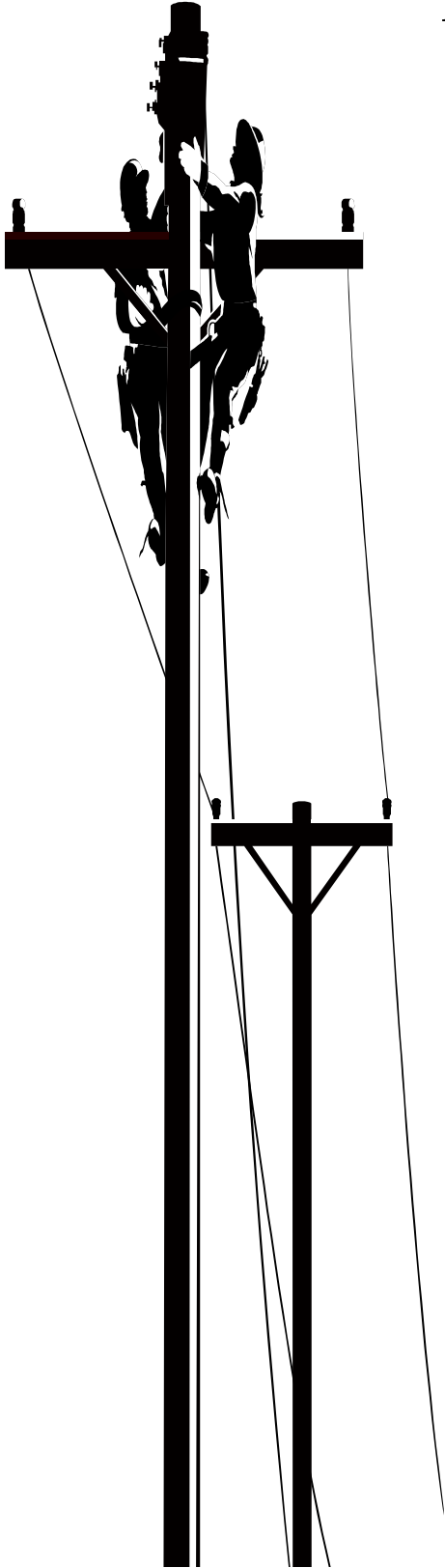


# Hudson Light & Power Department

More than a Century of Service



To the Hudson Light and Power Department:

I do hereby allow \_\_\_\_\_  
of whom I am the parent/legal guardian, to participate  
in a tour of the Hudson Light and Power  
Department's Generating Station. I agree to relieve  
and save harmless the Hudson Light and Power  
Department of the Town of Hudson for any injury or  
consequences resulting from said tour.

Signed:

\_\_\_\_\_

Date:

\_\_\_\_\_

In the presence of:

\_\_\_\_\_, Witness

## **Hudson Light & Power Department**

### **Power Station Tours**

The Hudson Light and Power Department offers tours of its Power Station on Cherry Street in Hudson on working days between 8 a.m. and 3 p.m. Youths are required to bring signed release forms from their parents or guardians. With larger groups, its is recommended that more than one adult chaperone the tour. To schedule a tour, contact [Customer Service](#) at 978-568-8736.

Employees at the Station are able to tailor the tour to your group's age level and your own time requirements. Let the [Station Superintendent](#) (978-5692-2368) know in advance how long you'd like the tour to last. Also, the Department provides ear protection for tour members in the event that the engines are running.

The Power Station is located on Cherry Street in Hudson. From Stow, follow Hudson's Main Street to the traffic lights at the intersection of Tower Street and Vila do Porto Boulevard (just before the building that houses Bacon Spirits). On the boulevard, take your first left onto Grove Street. (Grove Street is before the traffic lights.) On Grove Street, take your first left onto Cherry Street. The Power Station will be the fenced-in building at the far end of the street on your right.

There is a parking area immediately before the Station.

Enjoy your tour!